



HD 202

Hydraulic Crawler Drill



360 Degree Turn-Table



Expandable Crawler



Control Panel

HD202 is a heavy-duty and versatile drill rig, powered by 204 HP engine, with super high pull-back (15 tons) on the drill mast. This fully hydraulic crawler drill is built to be sturdy, simple and reliable, and with high drilling performance. The 360 degree turn-table enables the rig to manoeuvre well in difficult working environments and confined areas, furthermore to quickly engage to different drilling positions. With the simple and yet efficient hydraulic system, the rig can be mounted with high-torque rotator, powerful drifter, for various drilling requirements. It is designed and built for different large diameter heavy-duty drilling applications, as well as anchor drilling applications.



Hydraulic Drifter



Providing Rotary and Percussive Power

Hydraulic Rotator



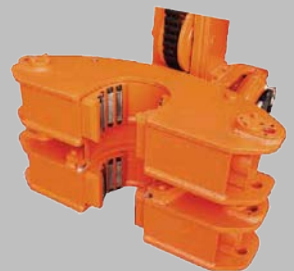
Providing Rotary Power

Double Rotary Head



Providing Double Rotary Power

Hydraulic Double Clamp



Disconnecting the Casing And Drill Pipe



Service Weight	Approx. 21,000 kg	(46,200 lb)
Drive	Diesel Engine Power Rating = 152 kW (204 HP) @ 2,000 rpm	
Hydraulic System	Variable Displacement Pump + Gear Pump Max. Pressure 240 Bar Q1 = 168 l/min. Q2 = 168 l/min. Q3 = 105 l/min. Q4 = 77 l/min. Q5 = 11 l/min.	(3,480 psi) (44.3 gpm) (44.3 gpm) (27.7 gpm) (20.3 gpm) (2.9 gpm)
Hydraulic Oil Tank	Capacity 500 l	(132 gal)
Fuel Tank	Capacity 300 l	(79 gal)
Mast And Feed Assembly	Mast Length Stroke Length Feed Force Pullback Force Feed Speed Retract Speed	: 9,945 mm : 7,400 mm : 15,000 kg : 15,000 kg : 0.73 m/s : 0.73 m/s (32.6 ft) (24.3 ft) (33,000 lb) (33,000 lb) (143 ft/min) (143 ft/min)
Rotator	Model Max. Rotary Speed Max. Torque	: HR4000 : 32 rpm : 3,900 kgm (28,140 ft lb)
Winch	Lifting Force Line Speed Wire Size	: 3,800 kg : 40 m/min : ø14 mm (8,400 lb) (131 ft/min) (ø 0.55")
Clamp	Model Clamping Dia. (max)	: MOD179A : 406 mm (16")
Crawler Undercarriage	Max. Travelling Speed Climbing Ability Specific Ground Pressure	: 1.69 km/hr : 17° : 0.63 kg/cm ² (1.05 mph) (8.9psi)
Dimensions (while mast down to horizontal)	Length Width Height	: 10,670 mm : 2,260 mm : 3,630 mm (35 ft) (7.4 ft) (11.9 ft)

Note : Specifications are subject to change without notice in accordance with HD Engineering's policy of continuing development.

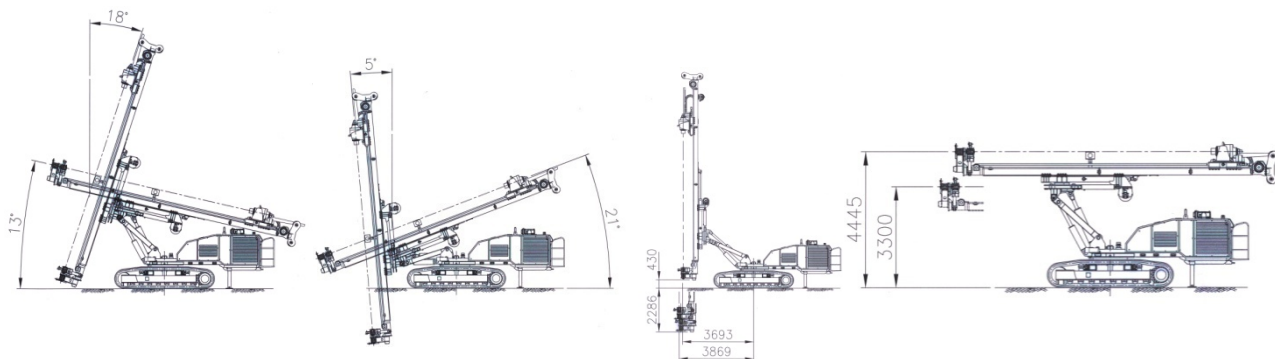
Mast Tilting Range

Boom in highest position

Boom in lowest position

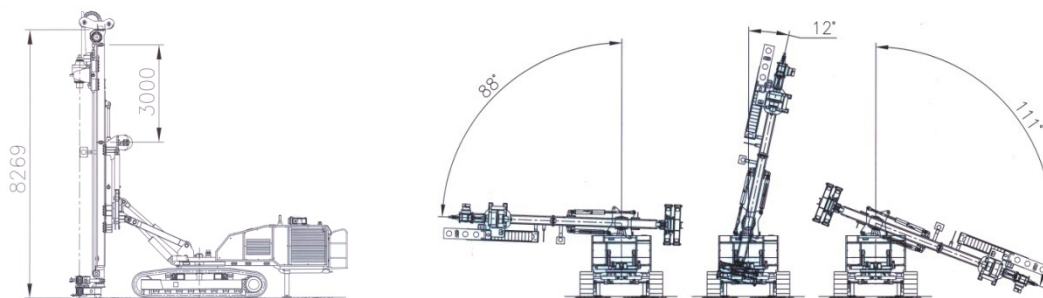
Mast in Vertical

Mast in Horizontal



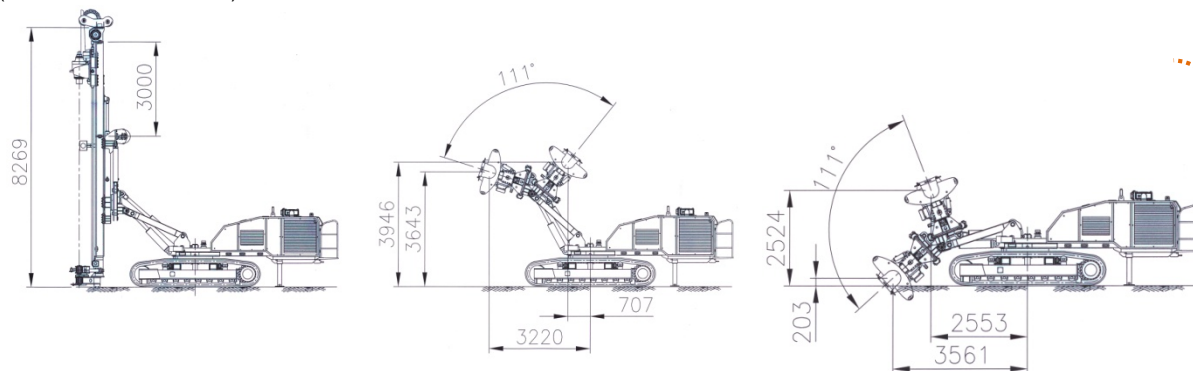
Mast Rotation Range

(with 3m Extension Mast)



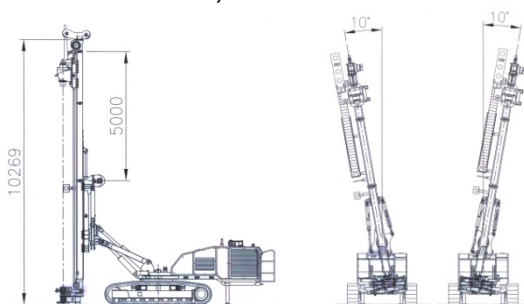
Side Drilling

(with 3m Extension Mast)

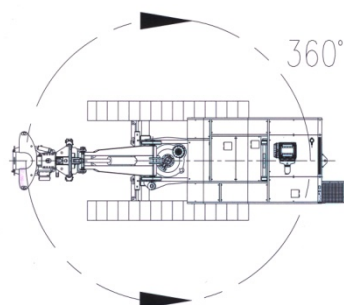


Mast Rotation Range

(with 5m Extension Mast)

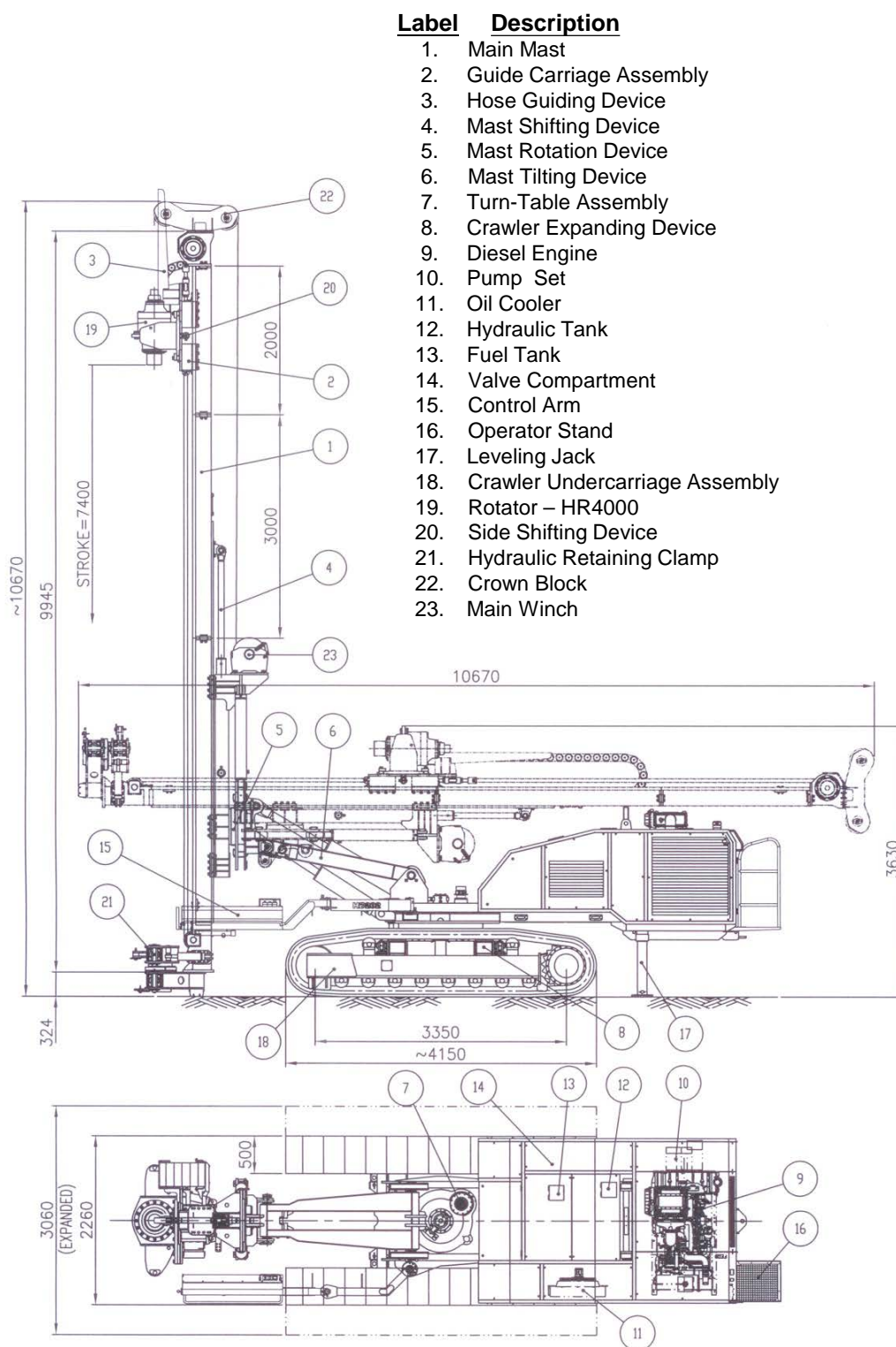


Machine Turning Range



All Dimensions in mm

Note : Specifications are subject to change without notice in accordance with HD Engineering's policy of continuing development.



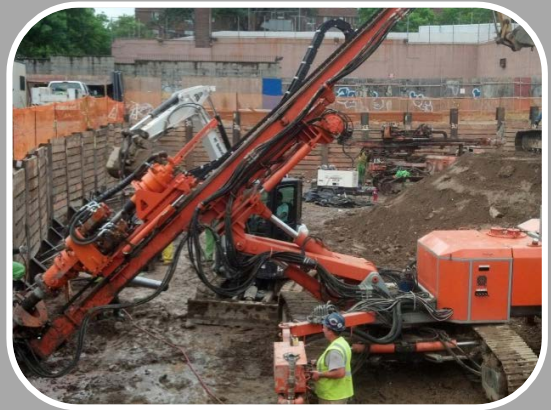
All Dimensions in mm

Applications

- Foundation Pile Hole
- Retaining Wall Drilling
- Pre-boring for Pile
- Anchor Drilling
- Grout Hole Drilling
- Soil Nailing



USA
- Augering Ø610 mm



USA
- Double Head Drilling Ø219 mm



Singapore
- Pre-Bored H Pile Ø560 mm



Hong Kong
- DTH Hammer Drilling Ø560 mm



France
- Rotary Drilling Ø508 mm



USA
- DTH Hammer Drilling Ø610 mm